






Pico de Lopera

Get stunning views of the Sierras de Alhama, Tejeda y Almirajara Natural Park, as well as of the more distant Sierra Nevada on this easily manageable and well-marked trail. Particularly beautiful in winter and spring, when the surrounding peaks are capped in snow.

Key Facts	
Length	5.3 km
Time	1h
Min/Max Altitude	1265 m /1486 m
Accumulated height difference	300 m
Season	All year

NB times/distances are there and back

	Medium	
	Easy	
	Easy	

DISCLAIMER: While we have made every effort to ensure that this information is accurate, conditions can change, and you are responsible for your own safety.

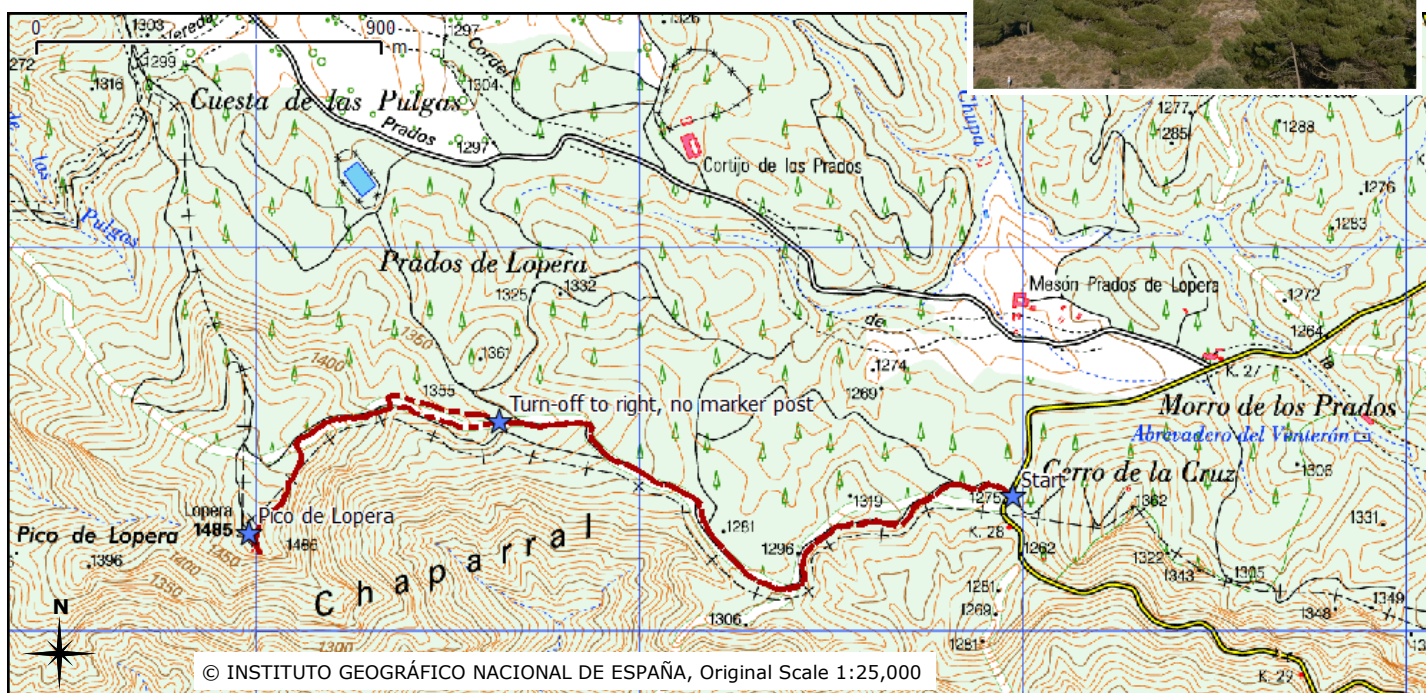
This is a clearly-marked walk that needs little explanation. Near the information panel at the start of the walk, you'll see the first marking post with a white arrow, directing you uphill away from the road. The posts clearly indicate the route, and after a few hundred metres you'll be able to see



your objective - the *Pico de Lopera*.



After about 1.75 km there is a junction which is not marked where you can either keep going straight up the firebreak or turn right onto a more gentle track. The alternative routes rejoin. At the top you are rewarded with spectacular 360° views.



Getting There

By Car: From Granada, take the E-902/A-44 towards Motril. Take exit 144 and then the A-4050 (known locally as the *Carretera de la Cabra* or Mountain Goat Road), towards *Lentegí, Otívar* and *Almuñecar*. Around km 27 (marked with a green sign) you'll see the *Mesón Prados de Lopera*. Keep going straight on, and after about another kilometre you'll see the information panel describing the *Pico de Lopera* walk on your right, with a small parking place beside it.

By bus: Not accessible by bus.

