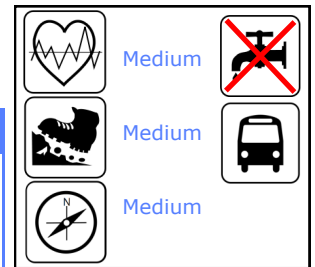


Güéjar Sierra - Pinos Genil

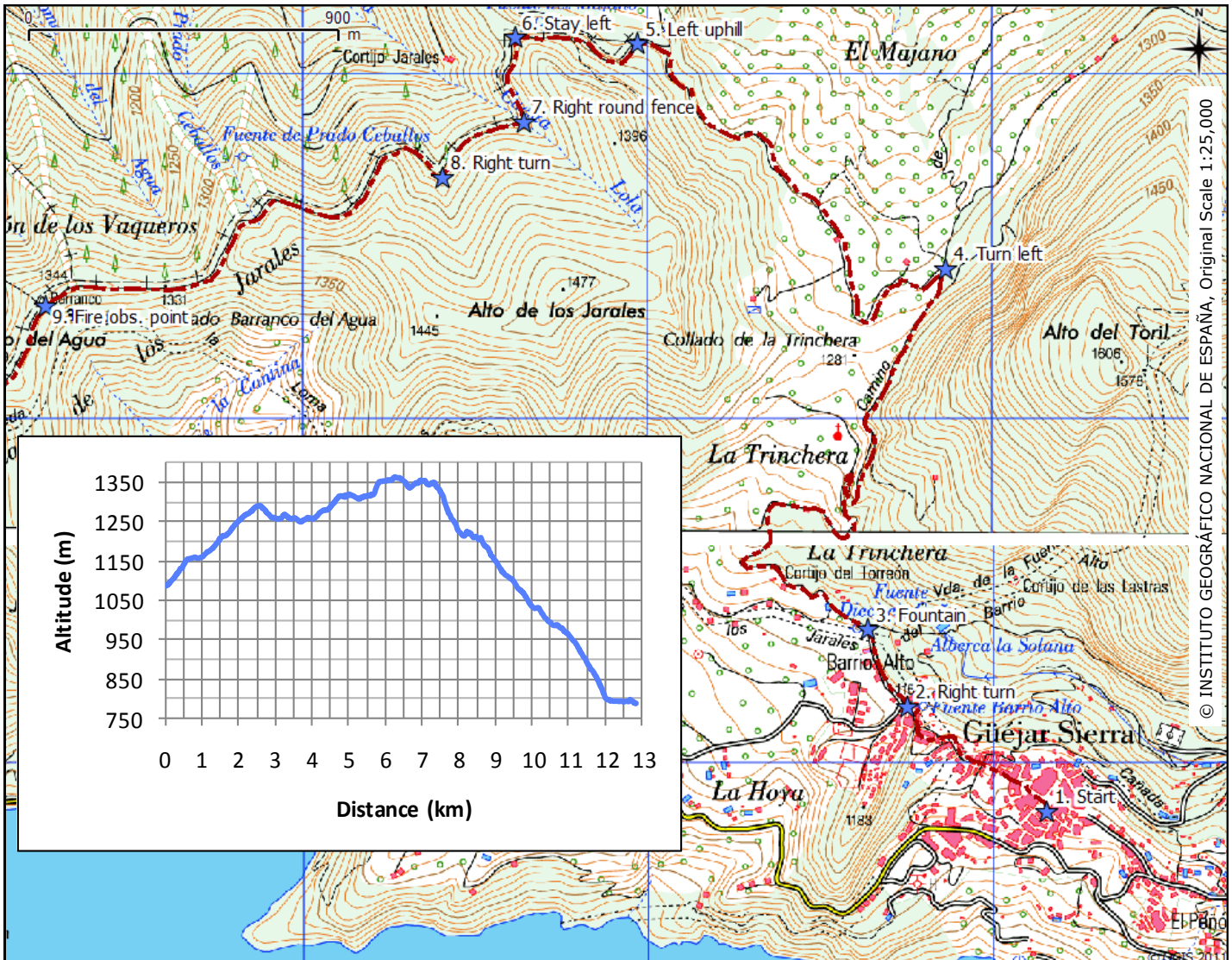
This walk takes you up onto the ridge that runs between Güéjar Sierra and Pinos Genil, from where you get great views in both directions: north to the Aguas Blancas valley backed by the Sierra de Huétor; and south to the river Genil valley and Canales reservoir, with the high peaks of the Sierra Nevada stretching out behind.

Key Facts	
Length	13 km
Time	3h 30 min
Min/Max Altitude	789 m /1365 m
Accumulated height difference	398 m asc / 697 m desc
Season	Spring, Autumn, Winter



DISCLAIMER: While we have made every effort to ensure that this information is accurate, conditions can change, and you are responsible for your own safety.

NB All distances and times are one-way.



1. From the main square in Güéjar Sierra, take *c/ Ramon Cajal*, signposted towards *Barrio Alto*. Keep going uphill.

2. At the top of the village, beside a children's playground, turn right, following the sign to *Fuente 16 Caños*.



3. Carry on past the *Fuente* (a fountain with 16 water spouts) on the dirt road.



4. The road takes you up over the pass. Once you start going down the other side, take the first left onto another dirt road.

5. After 1.5 km, when you get to a 4-way junction, turn left up the hill.

6. After a further 400m there is a track to the right, but keep left here.

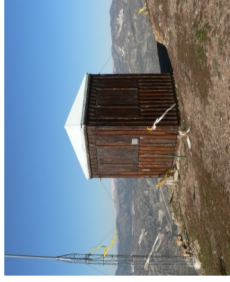
7. About 250m further on, you get to a

fenced area. Take the small path round to the right of the fence.

8. Once past the fenced area, the path becomes quite indistinct for a short section. Ignore the path that goes very steeply up to the left, and carry on round to the right. The path soon improves, and takes you gradually up towards the top of the ridge.



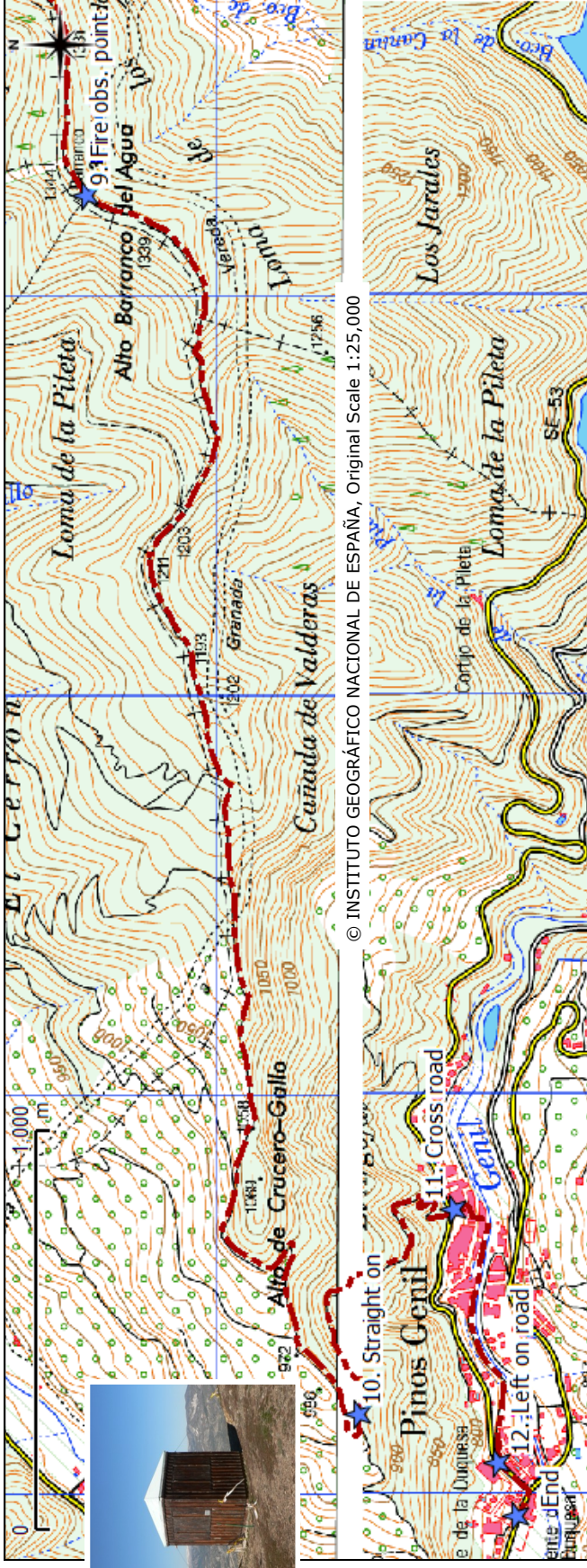
9. When you get onto the ridge you are rewarded with spectacular views of the Sierra Nevada, including the highest peaks of Veleta, Mulhacén and Alcazaba. 500m or so later you get to a forest fire observation post, which is the highest point on the route. It's easy to see why this was chosen as a vantage point. Almost immediately, you start the descent. The path is very rocky, and slippery in parts, so a walking pole would be useful here. Ignore side tracks going into fields on your right.



10. The path eventually becomes a dirt road and winds round the hill towards Pinos Genil. When you get to a junction with another dirt road which turns down sharply to the right, keep straight on.

11. When you get to the main road above Pinos Genil, go straight across and carry on downhill through the village. When you get to the river, turn right. Along the river there are several bar-restaurants where you can stop for a drink or a snack.

12. Carry on along the river and turn left when you reach the main road. After a few metres, turn right to get to the bus stop.



Getting There

By Bus: Güéjar Sierra and Pinos Genil are both served by route 390. There are 18 buses per day Mon-Fri, 9 per day on Saturdays and 4 per day on Sundays. Journey times are 20 minutes from Granada to Pinos Genil, 20 minutes from Pinos Genil to Güéjar Sierra, and 40 minutes from Granada to Güéjar Sierra. See www.treksierra Nevada.com/ getting-around for more info and links to current timetables.

By Car: We recommend leaving your car in Pinos Genil and taking the bus to Güéjar Sierra, to be able to do the one-way walk. From Granada, take the A-395 towards Sierra Nevada. Take the exit marked *Pinos Genil*, *Güéjar Sierra*, *Dúdar*, *Quéntar* and follow the road under the A-395 and across the river *Genil*. Turn right, and after 2.5km you'll get to the junction for *Güéjar Sierra* on the outskirts of Pinos Genil. The bus stop is just before the junction.

